

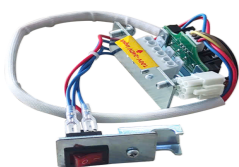
STANDARD PACKING AT-120



Track & Cover (length optional)



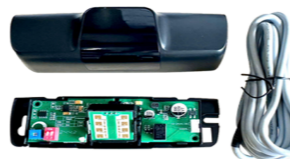
Controller



Power switch



Motor



Microwave Sensor



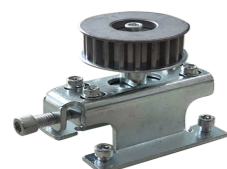
Photocell



Function remotes



Belt



Pulley

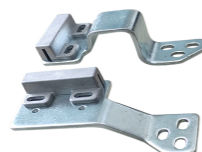


Hangers (New Anti-drop design)

Upgrade



Stopper



Belt connector



Screws



AUTOMATIC SLIDING DOOR

- Passed CE certification
- With 100W motor
- Max door weight 150kg



ROLLING CODE



QR WEBSITE

ARTEK INTELLIGENT TECHNOLOGY (ZHEJIANG) CO., LTD

Address: No. 343 Lingan Road, Tongxiang Industrial Park, Zhejiang, China

Tel: +86 573 67923922 - Fax: +86 573 67971856

Email: Info@artek.com.cn

Website: www.artekdoor.com

artek  
AUTOMATIC DOORS

CATALOGUE  
AT-120

# AUTOMATIC SLIDING DOOR AT-120

"The AT-120 automatic sliding door offers high performance, operates quietly and stably, and is easy to install quickly thanks to advanced technology applications such as: computer with microprocessor and 24V DC motor with gearbox...AT-120, with special China design, whose hangers can pass the motor, is the better choice for narrow door room"

## SMPS Power Supply

The computer is integrated with an SMPS (Switched-Mode Power Supply) to accurately and stably convert AC power to DC.



## Motor

24V DC motor with a gearbox to reduce power consumption while ensuring powerful and stable operation.

## Extended Connection Terminal

Connects to door open sensors, safety sensors, and other infrared devices using 24VDC and 12VDC power supply.

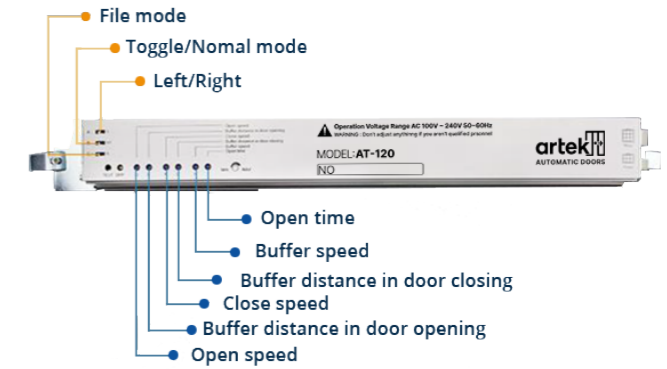
## Rollers

Rollers are made from acetal material, offering good load bearing and smooth, stable movement.

## Track

The track is made from 6063 aluminum alloy, offering good wear resistance and high structural strength.

## ABOUT CONTROLLER

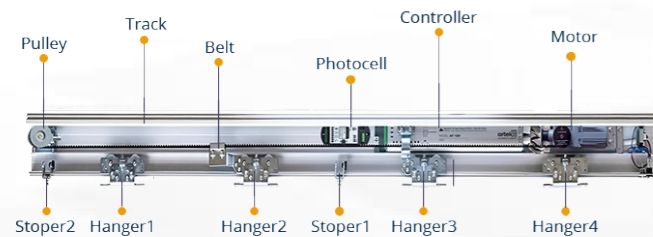


The New controller **status keeping function** after power off and restart



The old version of the controller will self-learn after power off and restart

## PRODUCT DETAIL

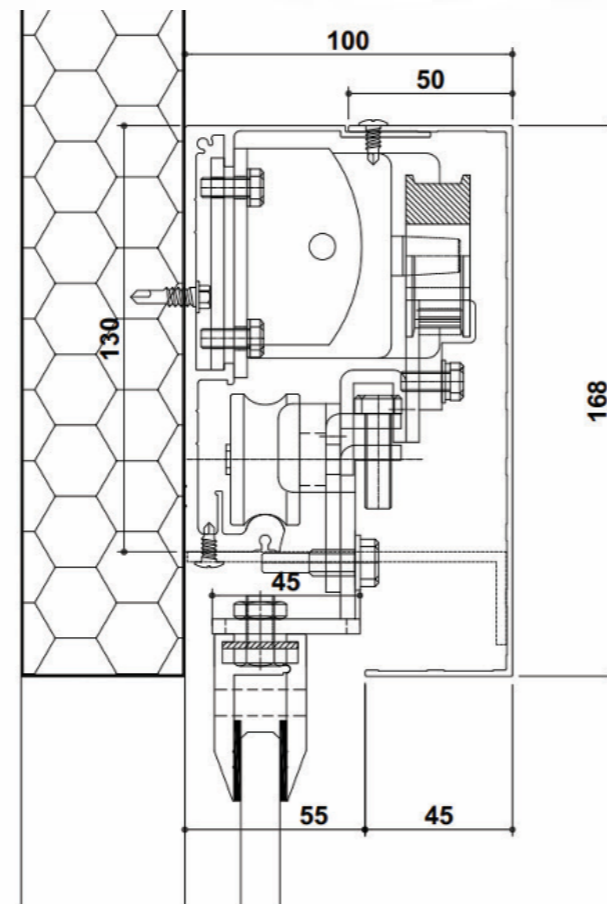


## ABOUT MOTOR



- Brushless Motor **100W**
- Speed **2800RPM/min**
- Max Capacity **150kg**
- Low noise less than **45dBA**

## CROSS SECTION DETAIL



## TECHNICAL DATA

Type	AT-120	
	Single sliding door	Bi-parting door
Door leaf weight	Max 150kg	Max 2 × 140kg
Door leaf width	DW = 500-2000mm	DW = 500-2000mm
Voltage	AC 90-240V, 50-60Hz	
Opening speed	10-55 cm/s (Adjustable)	
Closing speed	10-55 cm/s (Adjustable)	
Opening time	0-20 seconds (Adjustable)	
Manual open force	< 40N	< 50N
Motor	24V - 100W - 2800rpm	
Operating temperature	-10°C ~ +70°C	